

MONTHLY MEMBERSHIP PROGRESS REPORT

District 202 L

Results as of: 6/30/2024

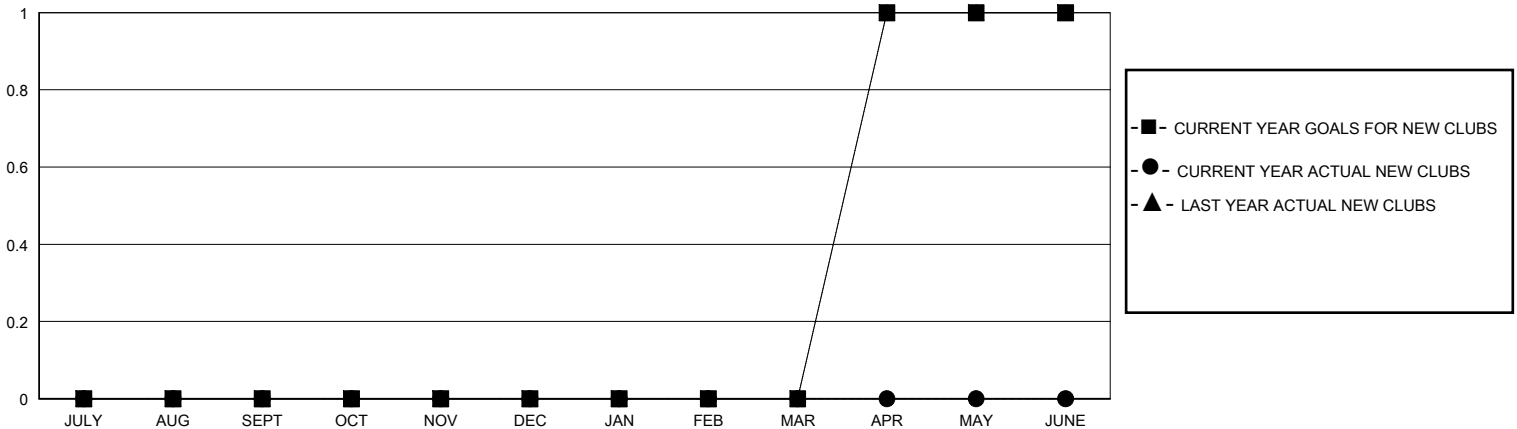
GMT:

LOCATION NEW ZEALAND

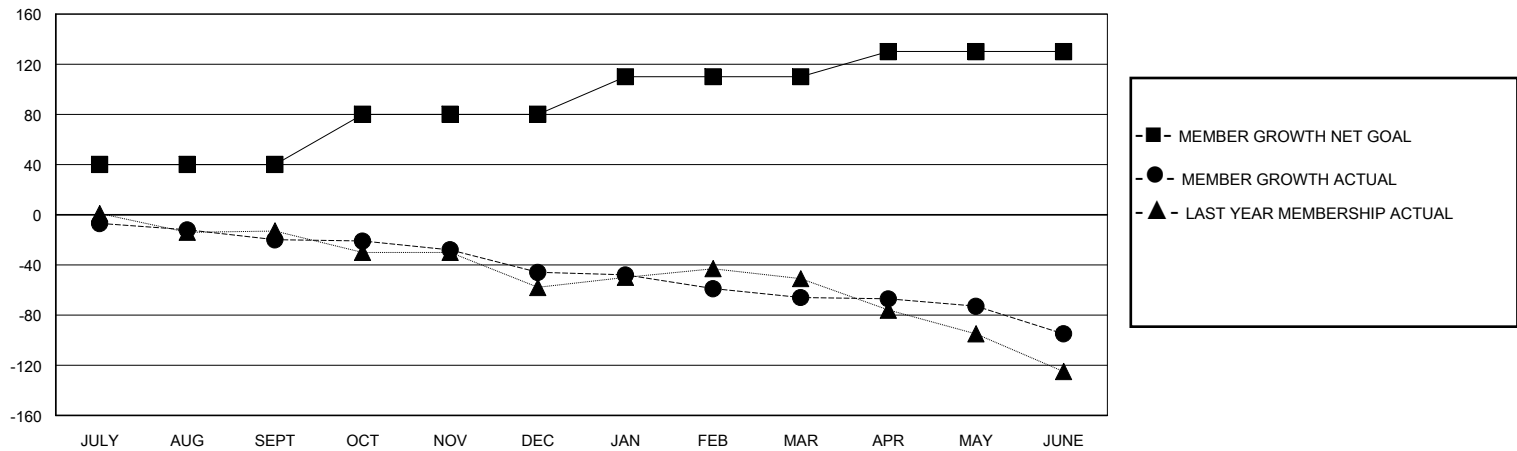
GMT CA

| Clubs | | | | Members | | | |
|-----------------------|---------------|-----------|---------------|-----------------------|------------------------|----------------------|--|
| RESULTS FOR 2023-2024 | | | | RESULTS FOR 2023-2024 | | | |
| QUARTER | NEW CLUB GOAL | NEW CLUBS | DROPPED CLUBS | QUARTER | MEMBER GROWTH NET GOAL | MEMBER GROWTH ACTUAL | DROPPED MEMBERS ACTUAL (including transfers) |
| JULY/AUG/SEPT | 0 | 0 | 0 | JULY/AUG/SEPT | 40 | 35 | 46 |
| OCT/NOV/DEC | 0 | 0 | 1 | OCT/NOV/DEC | 40 | 32 | 54 |
| JAN/FEB/MAR | 0 | 0 | 0 | JAN/FEB/MAR | 30 | 13 | 33 |
| APR/MAY/JUNE | 1 | 0 | 0 | APR/MAY/JUNE | 20 | 38 | 51 |

GOALS AND ACTUAL NEW CLUBS CUMULATIVE



GOALS AND ACTUAL MEMBERS CUMULATIVE



| | | |
|---|---|--|
| DROPPED CLUBS: 1 | 33 CLUBS OF 53 ADDED 1 OR MORE NEW MEMBERS | GENDER DISTRIBUTION MALE 867 (66.95%) FEMALE 426 (32.90%) |
| DROPPED MEMBERS DECEASED 17 CLUB CANCELLED 0 OTHER 166 TOTAL 183 | CLICK HERE FOR CUMULATIVE MEMBERSHIP DATA | TOTAL FAMILY UNIT MEMBERS 133 FAMILY MEMBERS PAYING HALF DUES 67 |